

Unlike land farming there are no inputs: no pesticides, no fungicides, no antibiotics. Seeds taken from local shellfish and seaweed are strung out on the farm and the ocean brings all the nutrients. Seaweed sequesters carbon five times faster than land plants as well as adding oxygen to the water, which aids shellfish growth. Shellfish, as well as being delicious, absorb excess nitrogen from the water and filter up to 5 gallons per day. Fish thrive in the rich farm environment. This is in keeping with First Nation principles of stewardship and renewal. The Southern Gulf Islands Community Resource Center (CRC) is hoping to work in partnership with Tsawout First Nation, whose traditional territory includes the Southern Gulf Islands.



For more information, please go to:
 Southern Gulf Islands
 Community Resource Centre:
info@sgicomunityresources.ca
 or 250 629-3665.

PROPOSAL FOR PENDER (S,DÁ,YES) ISLAND SEA HARVEST



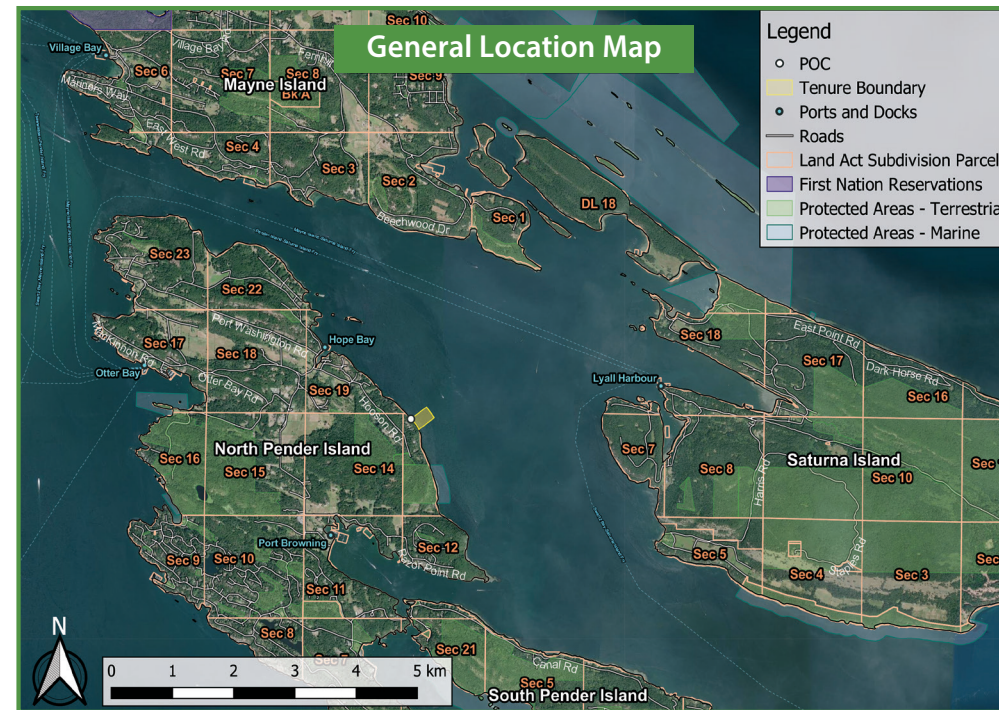
Kelp harvesting. Photo Credit: GreenWave

REGENERATIVE SEA FARMING

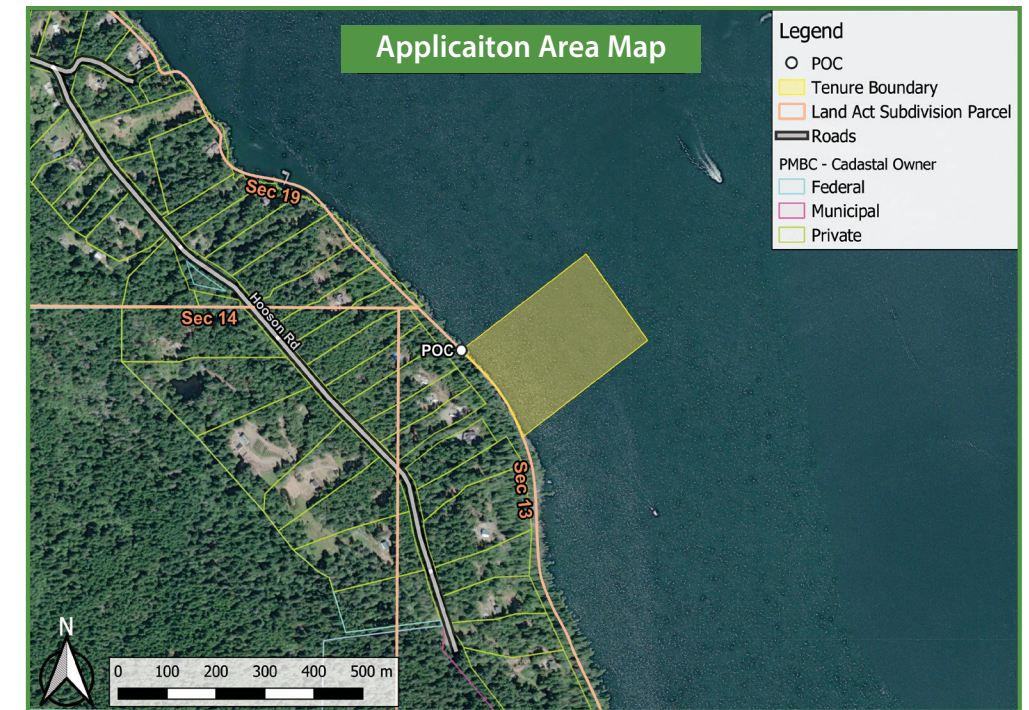
Regenerative sea farming occurs when commercial or subsistence aquaculture provides direct ecological benefits to the environment, with the potential to generate net positive environmental outcomes. It is the most sustainable means of growing food on the planet.

The system is quite simple: Lines are anchored to the sea floor with floats at the surface. Long horizontal grow lines are run between the anchor lines at about 2 meters depth. Along these lines seaweed grows down towards the sea bottom. Between the seaweed lines baskets and mesh nets are hung with shellfish: oysters, scallops, and mussels. That's it. All you see at the surface is a grid of floats.

We are hoping community members will join with us in this social enterprise. Most of the profits will be used to enhance the farm and to encourage other local communities to start their own farm. Please reach out to us at the CRC.



Our location is approximately 1 nautical mile south of Hope Bay on North Pender Island. It is away from shipping lanes and there is easy boat access from Hope Bay and Browning Harbour. This type of polyculture farm can be quite profitable for investors and for people working the farm.



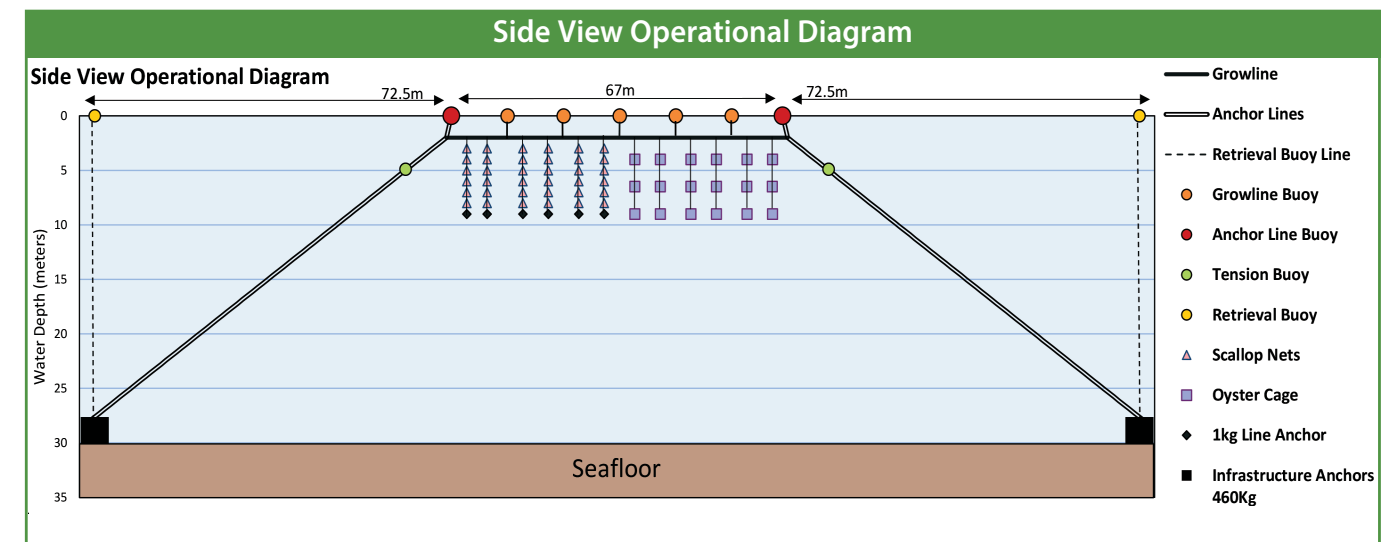
The location is adjacent to a strip of public land that runs along shore below cliffs. Growing area is 6-12 hectares. The farm will offer good, well paid, seasonal employment.



3 Kelps: *Hedophyllum Nigripes*, *Winged Kelp*, and *Five Ribbed Kelp*



Bull kelp fronds drying in the sun.



We will start with sugar kelp and scallops. Scallops require cold, clear water to grow. Here at Pender Island the temperature is ideal, and we are just a short boat or ferry ride from Sidney: the gateway to Greater Victoria and the Lower Mainland.